

MLM

Monsma Landscape & Maintenance, Inc.

3950 QUIGGLE SE ADA MI 49301 . 616-868-5767 . WWW.MONSMALANDSCAPE.COM

Growing Concerns

February 2010 Vol.4

Our Service Is Always In Season

Hello Friends!

An EXTRA special thanks for giving us the opportunity to serve your needs! Also a hardy shout out to the MLM team—they are the ones that turn our plans into reality. We are truly grateful that you have chosen MLM as your outdoor service provider. Let our newsletter be your early taste of Spring!

Dan and Dave

Right Around the Corner

Spring might not come fast enough for a lot of us, but it's only a couple months away. Time to start planning spring cleanups, the first fertilizer applications, and new landscape projects. We'll be there to help you with it all! Give us a call today!

Facebook Page

Be our friend on Facebook! And remember to check out our website while you're at it. www.monsmalandscape.com

Employee Spotlight: Alex Vander Schaaf

Alex joined MLM in 2006 starting as a lawn crew member. Now a lawn crew foreman, he also operates a plow tractor in the winter and is a versatile repairman in the shop. He really appreciates being able to work outdoors and making lawns look great. In his free time he enjoys spending time with his girlfriend, Dana. Also, Alex is a supporter of the English soccer club, Arsenal. Go GUNNERS!!!!

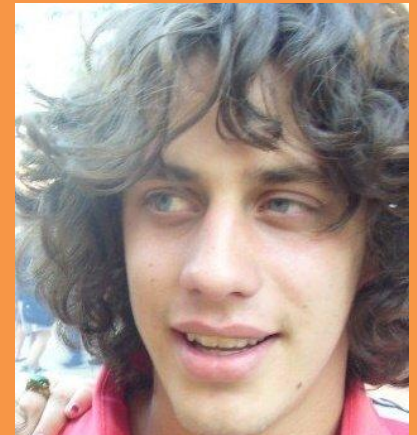
Invincibelle Spirit

Here's one for you hydrangea lovers! Invincibelle Spirit is a brand new hydrangea from Proven Winners. It is the world's first pink 'Annabelle' hydrangea. Invincibelle blooms on new wood. This means late freezes and fall pruning won't result in loss of flower buds. It blooms continually from early summer until a hard frost. Invincibelle reaches 3'-4' tall. Also, Proven Winners will donate \$1 to the Breast Cancer Research Foundation for each shrub sold. Ask Dan for more information on how this Proven Winner can add beauty and value to your property.



Pro Tips

By choosing drought tolerant and, in some cases, native plants, property owners can reduce the amount of fertilizer and water needed to have plants look their best. Another way to reduce water use is with a rain gauge connected to your irrigation system.



Plant Feature: False Indigo (*Baptisia Australis*)

Members of the Perennial Plant Association have voted *Baptisia Australis* as the 2010 Perennial of the Year. This plant has an abundance of characteristics that have made this a favorite of gardeners for years: gorgeous purple-blue flowers, hardy, wide adaptability, drought-tolerant, native, non-invasive, relatively pest-free, butterfly attractant, and is not bothered by rabbit or deer! Wow! *Baptisia Australis* does best in full sun and well-drained soils or tended gardens. It does not divide or transplant well due to its long taproot. Native Americans used the plant for a wide range of medicinal purposes. *Baptisia Australis* is called "False Indigo" because it was used as a dye substitute in place the superior True Indigo of the West Indies in colonial times. Ask us how this gorgeous, low-maintenance plant can get your neighbors talking...in a good way!



Container Gardening

Do you need to spruce up a corner of a deck or patio? Could your front entry be more welcoming? Container gardening can do all that, with arrangements for each season! We can supply a container or use yours, call for an early spring quote today.



copyright 2010 Monsma Landscape and Maintenance, Inc.

